

VR-642C Material Handlers

SPECIFICATIONS

BOOM

Boom type	3 stage
Max boom angle	70°
Min boom angle	-6°
Telescope extend speed	15.6 seconds
Telescope retract speed	13.9 seconds
Boom raise	10.6 seconds
Boom lower	8.9 seconds
Carriage rotation	113°

ENGINE

Make/model	Cummins QSB4.5-30T
Fuel/cooling	Diesel/liquid
SAE net hp	110 hp (82.1 kW)
Fuel tank capacity	35 gal (132 L)

OPERATION

Steering	Two-wheel, four-wheel or crab steering available controlled by steering wheel.
Drive	All-wheel drive
Hydraulics	Boom lift, telescope, carriage rotate and auxiliary boom circuit controlled by single joystick. Optional stabilizers controlled by console switch.
Transmission	3-speed powershift with soft shift

STANDARD FEATURES

- Single joystick control
- Air cleaner restriction indicators
- Back-up alarm
- Boom angle indicator
- Cup holder
- Engine coolant heater
- Frame level indicator
- Horn and seatbelt
- Lockable engine hood
- 12-volt power port
- Lockable battery cover
- Lockable fuel tank cap
- Lockable hydraulic tank cap
- Lockable toolbox
- Rear wiper/washer

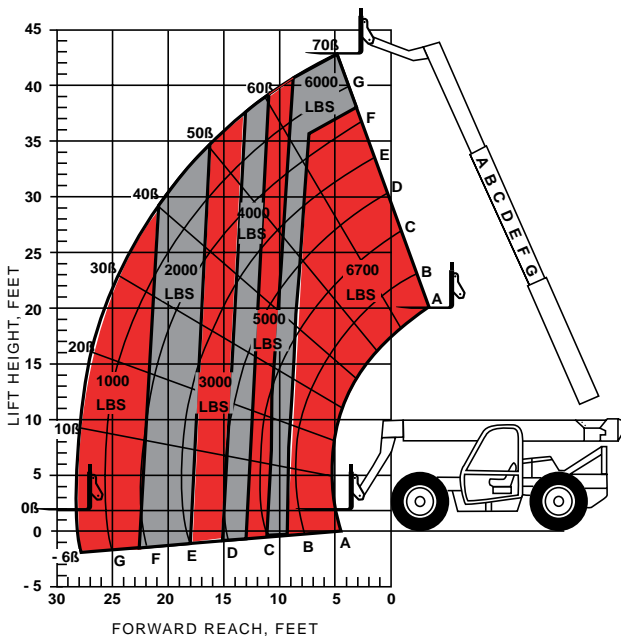
OPTIONS/ACCESSORIES

- Air conditioning
- All-weather cab w/heat
- Boom lights
- Dual joystick control
- Ether cold start
- Fenders
- Front and rear worklights
- Full-suspension seat
- Pintle hook
- Road lights
- Rotating beacon
- Single auxiliary hydraulics
- Specialty-tire options
- Stabilizers
- Turn signals/flashers/brake lights
- Vandal protection

ATTACHMENTS*

- Buckets
- Drywall handler
- Side-tilt carriages
- Swing carriages
- Truss booms
- Various width carriages

* Contact your local IR distributor for additional attachment options.



13345368

Always read and understand the published rated load capacity for the material handler model you are operating and do not exceed it.
Load ratings per ASME B56.6 — 1992.



www.irco.com

(877) IR BRAND

© 2003 Ingersoll-Rand Co.

Form 07-0006
Printed in USA 08-03